

CATEGORY 5e CMP



TECHNICAL INFORMATION ABOUT THIS PRODUCT:

MANUFACTURER: ATSCables.com

DESCRIPTION:

Category-5E UTP 1000' 8-Conductor, Bulk, CMP-Plenum Jacket, 24AWG CCA, Ez Pull Box

TECHNICAL SPECS:

Conductor	CCA / 4Pair
Size	24 AWG (0.51mm)
Insulation	PVC
Conductor Dia (mm)	0.5
Outer Diameter	5.3mm
Jacket	Plenum
Weight	25 lbs

Color of Pairs:

Pair 1	Blue,White-Blue
Pair 2	Orange,White-Orange
Pair 3	Green,White-Green
Pair 4	Brown,White-Brown

STANDARD COMPLIANCES:

ISO/IES

RoHS Compliant

APPLICATIONS:

- 100 Base-T4
- 100 Base-TX
- 100VG - AnyLAN
- 1000 Base-T (Gigabit Ethernet)
- 155 Mbps ATM
- 622 Mbps AT

MARKING:

" CAT5e 350MHz CMP PLENUM UTP 4-PAIR 23AWG EIA/TIA568-B,2-1

GENERAL INFORMATION ABOUT THIS PRODUCT:

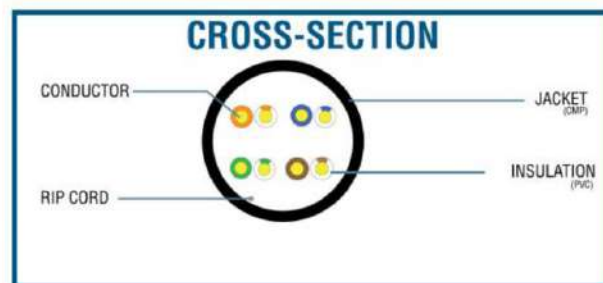
MANUFACTURER:

REFERENCE: ATSCables.com

FEATURES AND BENEFITS:

- High-Performance Data Communications Cable
 - Suitable for 350 MHz High-Speed Data Applications Fast Ethernet and 155Mbps TP-PMD/CDDI
 - Designed for Indoor Installations
 - Flame Retardant – Type Plenum
 - Category-5e Unshielded Twisted Pair (UTP) Cable
 - 4-Pair – Easily Identified Color-Striped Pairs
 - 24AWG CCA Conductors
- Length: 1000ft
Low Smoke, CMP Plenum

Available in Blue, White



Jacket Color

- Blue
- White



ELECTRICAL CHARACTERISTICS

Max. Conductor DC Resistance at 20°C (Ω/Km)	96.5
Rated Temperature(°C)	60
Velocity ratio	65%

Frequency (MHz)	RL (dB)	Attenuation (dB/100m)	NEXT (dB)	ACR (dB)	Frequency (MHz)	ELFEXT (dB)	PSELFEXT (dB)	Impedance(Ω)
	min.	max.						(Ohm)
0.722	22.60	1.82	67.00	65.00	0.722	66.00	63.00	100±15
1.000	23.10	2.00	65.30	63.00	1.000	63.8	60.8	
4.000	23.00	4.10	56.30	51.00	4.000	51.7	48.7	
8.000	24.50	5.80	51.80	45.00	8.000	45.7	42.7	
10.00	25.00	6.50	50.30	43.00	10.00	43.8	40.8	
16.00	25.00	8.20	47.30	37.00	16.00	39.7	36.7	
20.00	25.00	9.30	45.80	35.00	20.00	37.7	34.7	
25.00	24.20	10.23	44.30	32.00	25.00	35.8	32.8	
31.25	23.30	11.71	42.90	29.00	31.25	33.9	30.9	
62.50	20.70	17.25	38.40	19.00	62.50	27.8	24.8	
100.00	19.24	22.00	35.30	9.00	100.00	23.8	20.8	



ATSCables

11399 Frederick Avenue,
Suite B,
Beltsville, MD 20705, USA
(301) 836-1195

ATSCables

© 2021 ATSCables.com - All Rights Reserved
as ATSCables.com Privacy Policy.
sales@atscables.com



Cable ID: 483-1 UTP4 CAT5E 0.5ATS

Test Limit: TIA Cat 5e Perm. Link

Limits Version: V7.6

Date / Time: 12/04/2021 08:49:57 PM

Operator: LIXIAOHONG

Headroom 9.1 dB (NEXT 3,6-7,8)

Cable Type: Cat 5e U/UTP

NVP: 69.0%

Main: Versiv

S/N: 2034142

Software Version: V6.6 Build 2

Calibration Date: 12/23/2020

Adapter: DSX-8000 (DSX-PLA804)

S/N: 20475125

Test Summary: PASS

Remote: Versiv

S/N: 2035009

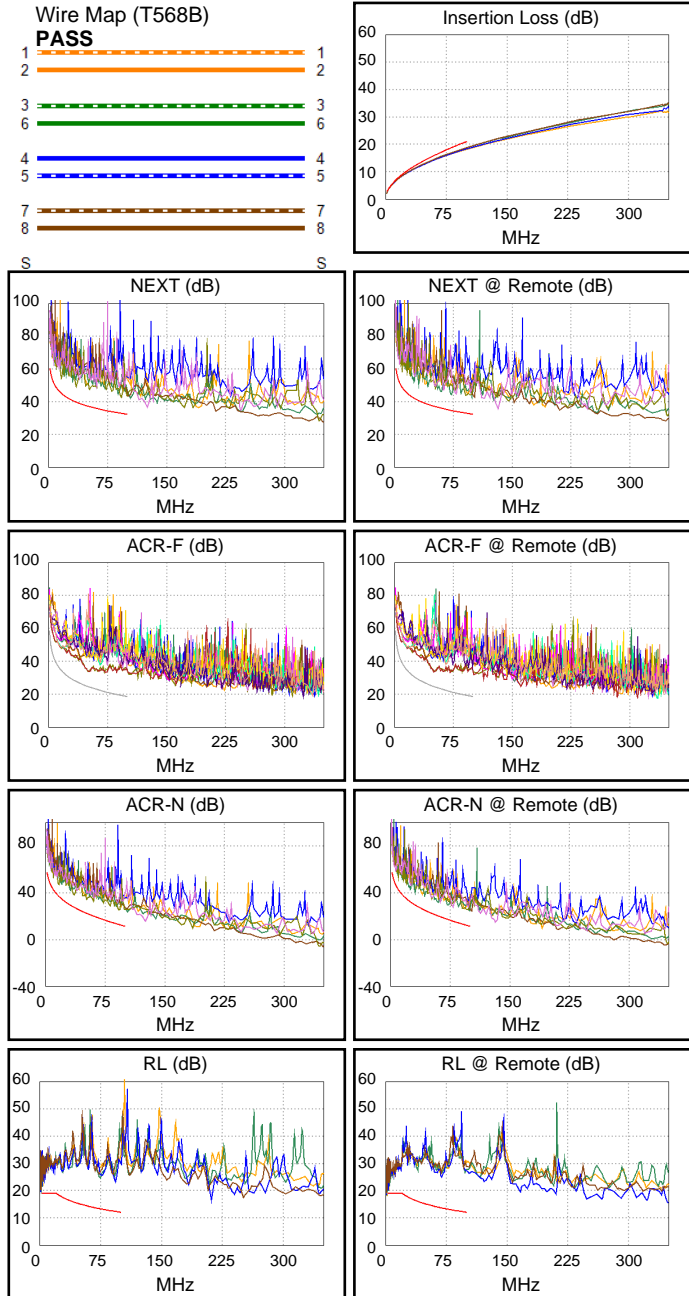
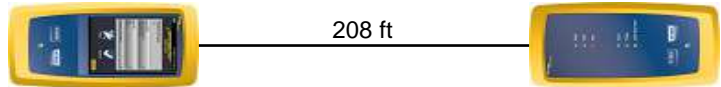
Software Version: V6.6 Build 2

Calibration Date: 12/23/2020

Adapter: DSX-8000R (DSX-PLA804)

S/N: 20485133

Length (ft), Limit 295	[Pair 4,5]	208
Prop. Delay (ns), Limit 498	[Pair 1,2]	314
Delay Skew (ns), Limit 44	[Pair 1,2]	8
Resistance (ohms)	[Pair 3,6]	29.59
Insertion Loss Margin (dB)	[Pair 3,6]	2.3
Frequency (MHz)	[Pair 3,6]	100.0
Limit (dB)	[Pair 3,6]	21.0



Worst Case Margin Worst Case Value

PASS	MAIN	SR	MAIN	SR
Worst Pair	3,6-7,8	1,2-4,5	3,6-7,8	1,2-4,5
NEXT (dB)	9.1	9.3	9.8	10.4
Freq. (MHz)	16.4	72.3	92.5	99.3
Limit (dB)	45.1	34.6	32.9	32.4
Worst Pair	3,6	4,5	3,6	4,5
PS NEXT (dB)	11.3	10.8	12.0	10.9
Freq. (MHz)	16.4	99.3	100.0	99.5
Limit (dB)	42.1	29.4	29.3	29.3

PASS	MAIN	SR	MAIN	SR
Worst Pair	3,6-4,5	4,5-3,6	3,6-4,5	4,5-3,6
ACR-F (dB)	8.9	8.7	11.7	11.4
Freq. (MHz)	50.5	50.5	71.3	71.3
Limit (dB)	24.5	24.5	21.6	21.6
Worst Pair	3,6	3,6	3,6	3,6
PS ACR-F (dB)	11.6	11.1	16.3	15.9
Freq. (MHz)	51.0	50.8	100.0	100.0
Limit (dB)	21.5	21.5	15.6	15.6

N/A	MAIN	SR	MAIN	SR
Worst Pair	3,6-7,8	1,2-4,5	3,6-7,8	1,2-4,5
ACR-N (dB)	9.5	10.5	11.9	13.1
Freq. (MHz)	16.4	24.8	92.5	99.3
Limit (dB)	37.1	32.3	12.8	11.5
Worst Pair	3,6	1,2	3,6	4,5
PS ACR-N (dB)	11.7	12.0	14.3	13.5
Freq. (MHz)	16.4	30.9	100.0	99.5
Limit (dB)	34.1	26.5	8.3	8.4

PASS	MAIN	SR	MAIN	SR
Worst Pair	3,6	3,6	4,5	3,6
RL (dB)	4.3	2.9*	10.7	2.9
Freq. (MHz)	2.5	2.5	93.8	2.5
Limit (dB)	19.0	19.0	12.3	19.0

Compliant Network Standards:
 10BASE-T 100BASE-TX 100BASE-T4
 1000BASE-T 2.5GBASE-T ATM-25
 ATM-51 ATM-155 100VG-AnyLan
 TR-4 TR-16 Active TR-16 Passive

* Measurement is within the accuracy limits of the instrument.